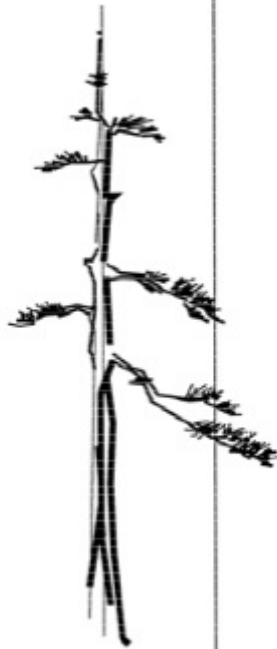


# BONSAI NEWS

February 2016



*Milwaukee  
Bonsai Society  
PO Box 240822  
Milwaukee Wi  
53224*

*Information Line  
414-299-9229*

## February Meeting

There will be no Tuesday evening MBS meeting in February. Too many times we have been snowed out!! So, the first meeting of the year will be on Saturday February 13 in the Grandparents' room downstairs at Boerner. It will run from 9:00 - 1:00 with a light lunch included. Our guest artist is Tom Longfellow covering the unique area of Fairy Tale Bonsai. Tom has been working with Walter Pall and Jim Doyle on this interesting art form. Please see the information below...

Tom will be demonstrating some carving / burning on a large maple. If you wish, you may bring a tree along for comments on whether it might be a candidate for the FTB.

(cont on page 2)

## February

Feb 13—Fairy Tale Style—Tom Longfellow

Feb 27—Novice Class\*\*

Feb 28—Silhouette Exhibit at the Domes

## March

March 1-MBS Meeting, taking bonsai out of storage/framing you bonsai

March 5-Novice Class\*\*

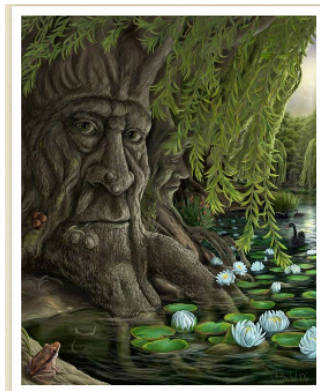
March 12-13-Sean Smith workshop/  
presentation

March 19-Novice Class/Bonsai basics\*\*

March 19-Intermediate Class\*\*

\*\* Members only

**Next Meeting**  
**February 13, 2016**  
**9:00am**  
**Boerner Botanical**  
**Gardens**



Milwaukee Bonsai Society has been presenting a beautiful Silhouette Show at the Domes for many years. We will need 8 to 10 trees for our display. Please contact Tony P (414-350-8069) if you have a tree to exhibit or if you wish to volunteer on Sunday. As a volunteer you will not have to pay the entrance fee to the Domes.

Join us on Sunday February 28 (9:00 - 4:00) to see our display as well as the popular train show.

A word of caution: if you are considering displaying your tree... If your tree is stored where it is frozen, your tree would most likely come out of dormancy being inside for 7 or 8 hours.

(cont from page 1)

Fairy Tale Bonsai (FTB) has nothing to do with the recent garden center trend for creating fairy tale gardens, or a specific style like root-over-rock or cascade as we see with classical bonsai. The term FTB was coined by Walter Pall when he and his students at the International Bonsai Academy in Croatia realized that the collected material they were using fell far outside the traditional norms of classical bonsai. The material was mostly collected hornbeams with massive trunks and often had large stones embedded in their root structure and lower trunks.

The fact that the trees were deciduous made the contrast with classical bonsai aesthetics all the more apparent. There can be no holes in deciduous bonsai and certainly no rocks or holes where rocks used to be. Eliminating large lower branches left wounds so big they would never callous-over, and in general, they seemed to be too ugly and hard-lived to be considered worthwhile material to seriously work with. They did however have enormous character or "soul". Using this material required that this aspect of the tree must become the paramount feature. The essence of FTB is to bring out the soul of the tree, not to create a tree that looks like any other but one that is totally unique to itself.

Walter was reminded of the trees featured in classic children's literature, and developed the following description to help explain the concept:

"And Sarah and John left their home in the afternoon because their mother had told them that she could not feed them anymore and would sell them to the rich farmers who would keep them like slaves. So the children walked away into the woods holding their hands. They went deeper and deeper into the forest and became quite afraid. It was getting dark and the forest made it even darker. The children felt without protection against all the wild animals and the ghosts and the evil ones. They became very tired and finally saw this enormous tree from far away. They were scared of the size, the mighty trunk and the branches which were so thick like other trees and moved into all directions like an octopus. They almost did not dare to get closer. But since they had no choice they finally arrived at the tree, which was even mightier than it had looked before. And they crawled over the enormous roots and found this crevice in the trunk which was large enough for both of them to enter. There they felt safe and fell asleep. Then at midnight they woke up because the tree spoke in a deep, gentle voice to them and asked them to crawl out. He wanted to show them the forest and introduce them to all the animals and to the other trees. And Sarah and Joe knew they were in a safe place and loved the tree. From then on trees meant something very special to them."

FTB does not require collected stock but it does require material that is challenging. This is what I mean by challenging: trees that provide too many options but not one that is "easy" or a sure thing; trees trained to be a bonsai but may have suffered through animal abuse or neglect where a primary branch or branches may have been lost; trees that have a flaw so egregious that it begins to border on the grotesque. All of these might work well within the context of FTB.

FTB is not about taking shortcuts or trying to make trees easier than classical bonsai. If anything, more skill is required to do quality work within this style. Why bother to do it? It is very rewarding to realize a tree's maximum potential and that is what FTB is all about.

For pictures and more information:

<http://walterpallbonsaiarticles.blogspot.com/2014/02/thefairy-tale-bonsai-style-fts-bywalter.html#uds-search-results>

### **New Talent Contest Comes To Michigan in 2016**

The New Talent Contest, jointly sponsored by Joshua Roth and the American Bonsai Society, is an annual competition designed to recognize and promote new bonsai talent in North America. Sadly, the contest was not held last year as too few artists asked to participate. In response, the ABS Board of Directors voted to donate an additional \$1,000 in prize money, increasing the first prize to \$1,500 and the runner up prize to \$700.

A bonsai artist with less than 10 years experience can become eligible for the contest in two ways; by winning a regional Joshua Roth/ABS New Talent contest or by submitting photographs of trees they have personally designed to the NTC coordinator, who will invite those candidates whose work shows the most promise to participate in the second stage of the contest.

The second stage will involve each contestant producing a bonsai from the raw material provided on Thursday, May 12, 2016 during the ABS Learning Seminar at the Frederik Meijer Gardens and Sculpture Park, in Grand Rapids, MI. The resulting bonsai will be judged by a panel of experts and voted on by the conference attendees, with the winner and runner up being announced at the banquet on Saturday night.

Detailed eligibility requirements and instructions can be found on the ABS web site. For additional information contact ABS Board Member/NTC Coordinator, Dave Hodgetts at: [djhodgetts@aol.com](mailto:djhodgetts@aol.com)

The event is also open to observers, who are encouraged stop by to cheer the contestants on and to watch them create works of art as they "find the bonsai in the bush."

## **President's Message February 2016**

This is my inaugural President's message, the first of hopefully many more.

My goal is to maintain and expand the learning experiences that MBS has to offer. Your MBS Executive Committee is here to listen to your suggestions on what you like and how things can be improved. During Society meetings, we not only want to review the basics for the newer members, but also keep things interesting for our veteran members.

First up, on Saturday, February 13th, we will have Tom Longfellow show how to create a "Fairy Tale" tree. Tom has been inspired by the work of Walter Pall. Search "Walter Pall Fairy Tale trees" for more information. This will begin at 9 AM at Boerner. Since this will run until 1 PM, feel free to bring something for lunch, something to drink and/or some snacks. We hope to have a snack table with things to nibble to tide you over the lunchtime. For those of you who want to try your hand at creating your own Fairy Tale tree, Tom has kindly agreed to hold a workshop on Saturday, February 20 from 8:30 until 12:30 at Boerner. Bring along your checkbook. Tom will have a sign-up sheet available at the meeting.

For those of you who are interested in the Novice Class, it will begin in February. There are a few spots remaining. If you are interested, go immediately to the MBS website and print off a registration form. Fill it out and send it in with your check ASAP.

February 28th also brings the Silhouette Show at the Domes. Members will provide trees in their naked glory (the trees that is). Without leaves, the deciduous trees are in their fundamental form and we can see the design and motion of their trunks and branches. We are still looking for members to help with set up, to tree-sit and answer questions from the public.

On the weekend of March 12-13, we are bringing in Sean Smith. Sean is world renowned for his work with suiseki daizas. MBS will host him for two workshops and a presentation. Do an internet search on Sean and get a taste of what he has to offer. Keep an eye out for workshop registration information. Material will be shipped from Pennsylvania for our workshops. You don't want to miss this opportunity to work with Sean.

The American Bonsai Society (ABS) will be having its conference in Grand Rapids, MI May 12-15. Early registration ends in March and the workshops are filling up. Four workshops and meals are included with the price of the registration. Go to: <http://www.absbonsai.org/2016-abs-bonsai-in-the-garden-learning-seminars> for more information. This is a great opportunity to connect with a great bonsai association and it's easily within driving distance. A number of our members have already sent in their registration, so you will have familiar faces to connect with.

For those of you who have taken the Novice Class, but don't feel that you are ready to jump into the Intermediate Class. Kris Z. has designed the "Bonsai Basics" Class that will emphasize the fundamental techniques of bonsai. As was described in the December Newsletter: wiring, wiring, wiring, tool sharpening, soils, fertilizing, pot cleaning and more. This class will begin in March.

And last, but certainly not least, is a revamped Intermediate Class. Steve Ca. has graciously agreed to teach the class this year and is doing some modifications to the syllabus with work with his strengths. Steve is a long time MBS member who has been working with Boon out in California for more than 3 years as well as with Peter Tea for the last two. Anyone who participates in this class will come away with a deeper understanding of the seasonal cycles of the bonsai trees and when to do work on the tree at the appropriate time of the year.

Oh, I can't end without telling you about who Steve Co.'s has been able to bring in as the *Excellence in Bonsai* artist. We will be having Marc Noelander coming this year. He is from the Belgium and is the creator of the premier bonsai exhibit in Europe, the Noelander Trophy. He will be coming in directly from his presentation at the Rendezvous at Brussel's Bonsai. I have had the opportunity to work with him and can't wait to sign up again.

Looking forward to seeing you on February 13<sup>th</sup>.

Sincerely, Judy

## Sean Smith - Special Guest Artist for March Workshops

Sean lives in the United States in Marysville, Pennsylvania, where he owns and operates Custom Oriental Wood-craft. Sean took his 20 year passion for Bonsai and Suiseki along with his extensive background in carpentry and put all them together to start his own business in 1994. He currently creates Bonsai display tables, and carves Diaza for renowned Bonsai and Suiseki enthusiasts all over the world. As a result of this work many awards have been bestowed upon him for his craftsmanship as well as his strict adherence to these ancient Japanese art forms. Following are just a few of his awards.

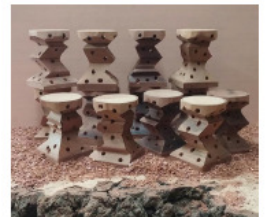
- In 2001, Mr. Arishige Matsuura, President of the Japanese Suiseki Association, proclaimed Sean the number one Diaza carver outside of Japan.
- In 2003, Sean was the first American to exhibit an American Suiseki in the Japanese National Suiseki Show at the Meji Shrine in Tokyo, Japan.
- In 2008 Sean was given recognition by the World Bonsai Friendship Federation for promoting and expanding the Japanese art of suiseki

Sean will be here for **two workshops on March 12**. All participants in both workshops must have a dremel to use. Also please bring safety glasses and a dust mask.

Sean will have a powerpoint presentation before each workshop.

morning - diaza carving - stone and wood provided

afternoon - cascade stand carving - stand is about 6" wood provided



### Sunday March 13

Sean will be at Boerner from 10:00 - 1:00 for a presentation on his experiences with suiseki and diaza around the world. Free and open to all.

---

Registration form:

Name \_\_\_\_\_ Phone contact # \_\_\_\_\_

Email address \_\_\_\_\_

Please check: Diaza workshop \$125 \_\_\_\_ Root Stand workshop \$125 \_\_\_\_ Both \$225 \_\_\_\_

Bring to the February meeting or send to:  
Milwaukee Bonsai Society,  
P.O. Box 240822  
Milwaukee WI 53224

**No matter what experience level you are in the wonderful world of bonsai, there's always room to work on your basic skills.**

**So, MBS is introducing ...**

## **BonsaiBasics**

Prerequisite: Novice class or like training

Participants must have:

tools

pots

a deciduous tree

a conifer - If you don't have one, we'll find one at the nursery crawl

a tropical tree (optional)

**Class #2 (Saturday April 9, 9-1)**

Wiring with dead trees

Pot cleaning

fertilizer / pest control / soil

Homework

**Class #1 (Saturday March 19, 9-1)**

Wiring with wire branches

Tool sharpening

watering system

Homework

**Class #3 (Saturday May 21, 9-4)**

nursery crawl

cleaning out a tree

pruning (not leaving knobs...)

cut paste...

Homework

Please bring to the February meeting or mail to:

Milwaukee Bonsai Society

P.O. Box 240822

Milwaukee, WI 53224

**Class #4 (Saturday June 4, 9-1)**

Wiring on conifers

wiring with copper wire

---

### **BonsaiBasics Class**

Name \_\_\_\_\_ Contact # \_\_\_\_\_

Email \_\_\_\_\_

\$75 Fee enclosed check # \_\_\_\_\_



PO Box 240822  
Milwaukee, WI 53224  
Www.milwaukeebonsai.org  
RETURN SERVICE REQUESTED

Next MBS meeting will be  
February 13, 2016 at 9:00am  
Boerner Botanical Gardens  
9400 Boerner Dr  
Hales Corners, WI 53130

#### 2015 MBS OFFICERS

President	<a href="#">Judy S</a>
First VP	<a href="#">Kris Z</a>
Second VP	Tony P
Secretary	Leo S
Treasurer	Wally V
Director	Rob P
Director	<a href="#">Susan L</a>
Director	Bryan L
Past Pres.	<a href="#">Greg P</a>

#### Other Club Functions

Newsletter	<a href="#">Melissa J</a>
Webmaster	<a href="#">Pam W</a>

Director of Children's Education—Jean S  
PAB Board—Steve Co, Ron F & Houston S



Picture by Jean S

Thick blanket of snow  
Snuggling the flowerbeds  
With a winter wrap  
~Jan Allison