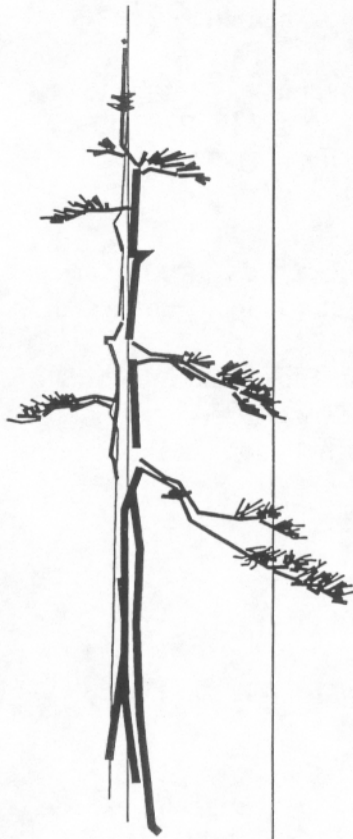


October 2005

Bonsai News



Milwaukee
Bonsai Society

P.O. Box 198
Brookfield, Wisconsin
53208-0198

Information Line
414-299-9229

KRIS' KORNER

(by Kris Ziemann)

Good Autumn to you! What fantastic days we have been having. My favorite time of year. Winter looms in the distance, but we'll deal with that later. I'm enjoying my trees as they change with the season and wonder where I'm going to store all the 2005 new arrivals! Our discussion at the upcoming meeting will be of great assistance for newcomers (and old-timers trying out new species) as to what to do with their trees over the winter. Our members will be sharing their experiences and tips. Come ready to take lots of notes (or does that sound too much like school??)

This will also be our first endeavor with a White Elephant Auction. I love auctions and the excitement that comes with all the bidding! Please read the article elsewhere in the newsletter to prepare yourself for the festivities.

I want to thank all of the volunteers who help keep this club vibrant and innovative. I believe we are becoming known around the country as a growing, exciting club with lots of *gemütlichkeit* (let's all get the dictionaries out... we'll need to know this word for the convention coming up in June 2006)! We wouldn't have attained this degree of success without dedicated volunteers at workshops, ... special events and at Executive Committee meetings. THANK YOU AGAIN!!

See you October 4th.

Kris

LOOK FOR THE RESERVATION FORM FOR THE HOLIDAY PARTY IN THE NEXT NEWSLETTER. ALSO THE NEW MEMBERSHIP RENEWAL FORM WILL BE IN THAT ISSUE

• MANY THANKS to Will Vandewalle who donated a number of trees and a watering system to the club!! He is moving to Oregon and can't take them all with him. Look for the trees at the October Auction.

2005 Club Events Calendar

October

Tues 4 – Dead Tree Contest/White Elephant Sale/Preparing for Winter

November

Tues 1 – Club Meeting

December

Tues 6 – Holiday Party

MBS Officer and Board of Directors Nominations

New members:

Treasurer: Mary Turner

Director: John Moore

Continuing Members:

President: Kris Ziemann

1st Vice President: Scott Hurula, Sr

2nd Vice President: Darlene Shaginaw

Secretary: Sharon Schmidt

Directors: Joe Herbert

Allen Koszarek

Past President: Jack Douthitt

Sincere thanks are extended from all of us to Karen Kleineider, Retiring Treasurer and Erskine Tucker, retiring Director, for their many hours of service to the Milwaukee Bonsai Society.

SOMETHING NEW...

By Kris Ziemann

A new twist to the Buddy Bucks. Anyone who has earned more than 5 Buddy Bucks will receive 1 raffle ticket for each BB over the 5 needed for the Holiday Dinner. These raffle tickets can be used anytime during 2006. So, here is our listing:

1 Buddy Buck (\$3 off dinner) - Laura Larrabee, Elli Wilder, Nick Barth, Barb Zacharias, Carol Butula, Dick Butula, Dorothy Schenzel, Craig Berg, Milt Baas, Audrey Baas, Yvonne Szatkowski, Jim Wenders, Pat Basich, Jay Basich, Ken Krueger, Nancy Ellis, Bill Ellis, Mary Ann Barragry, Don Gumieny and Karen Gumieny.

2 Buddy Bucks (\$6 off dinner) - Gregg Wein, Joe Nemecek, Gen Molling, Tom Kerner, Jeff Moths, Pam Woythal, Ron Fortmann, Houston Sanders, and Scott Hurula Jr.

3 Buddy Bucks (\$9 off dinner) - Jerry Niemiec and Marilyn McKnight

4 Buddy Bucks (\$12 off dinner) - Delores Day, Ralph Stockhausen, Camrin LaFond and Ken Hahn.

5 Buddy Bucks Complimentary dinners go to:
(REMEMBER - YOU MUST STILL TURN IN A RESERVATION FORM)

Jim Toepfer and Melba Stockhausen.

Complimentary dinners and raffle tickets go to:
(REMEMBER - YOU MUST STILL TURN IN A RESERVATION FORM)

6 Buddy Bucks - Steve Carini

8 Buddy Bucks - Tony Plicka and Karen Kleineider

9 Buddy Bucks - Jack Douthitt, Scott Hurula and Joe Herbert

10 Buddy Bucks - Erskine Tucker and John Moore

11 Buddy Bucks - Allen Koszarek

12 Buddy Bucks - Sharon Schmidt and Darlene Shaginaw

13 Buddy Bucks - Jean Sher

20 Buddy Bucks - Kris Ziemann

THANK YOU VOLUNTEERS!!

Sorry for omitting the following names from the Buddy Bucks list:

1 Buddy Buck

State Fair 2005 - Delores Day, Scott Hurula, Scott Hurula Jr

Also, thanks to the following volunteers who added to the fun in the Public Workshop Saturday Sept 17. The creations that left were outstanding!

1 Buddy Buck

Jean Sher, Tony Plicka, Steve Carini, Erskine Tucker, Jerry Niemiec, Joe Nemecek, Ron Fortmann, Joe Herbert and Kris Ziemann

If you feel your name has been omitted somewhere, PLEASE do call (262-512-1228) or email me (krisziemmann@mac.com)!!! Kris Ziemann



Tony Plicka
(414) 761-9298
Fax (414) 327-4882

NINO'S
Landscape Company

P.O. Box 510108
New Berlin WI 53151

Bonsai Supplier

❖ Specimen trees ❖ Stock material ❖ Seedlings
❖ Tools ❖ Pots ❖ Books ❖ Videos ❖ Mail Order

Now accepting VISA and MasterCard

White Elephant Auction 2005

PLEASE ARRIVE BEFORE 6:50 with all the items you would like to "pass on" to others in the club. Come with a list of these items, a description, and the lowest amount you will take.

Example:

Jane Smith

set of 2 beige glazed pots \$5
1 ficus in green plastic pot \$15 etc.

(REMEMBER: 10% of the sale will go to the club as a fund raiser).

We will tag your items and set them on the display table. If you do not come prepared, it will take a very long time to get this organized.

As we vote on the dead trees winners, you can also sign up to get your bidding number. You must have one in order to bid. Then sit back and enjoy the auction.

After the auction, we will have a discussion on "Over-wintering trees". This is a very informative give and take session with many of our members sharing their experiences with all different types of trees.

While this discussion is going on, the results of the dead tree contest will be tallied and the auction items will be totaled for buyers and sellers. This is the first time we're trying this, so please bear with us!! :o)

If you have any questions, please call Kris 262-512-1228.

Your #1 Milwaukee Bonsai Source!



THE CITY GARDENER

Featuring
Bonsai and bonsai accessories

- ◆ Indoor and outdoor bonsai ◆ Pre-bonsai
- ◆ Pots ◆ Bonsai soil ◆ Wire ◆ Tools ◆ Books
- ◆ Clay miniatures and more

Plus We offer practical, easy-to-understand help in choosing and caring for your bonsai

1 Block
North of Brady Street

1814 North Farwell Avenue
Milwaukee, Wisconsin 53202
(414) 224-8224

Spider Mites – By Dave Bogan

(Editor's note – this has been reprinted in this newsletter before, but after seeing it in the Greater Louisville Bonsai Society newsletter this month, I decided to reprint it. It is important at this time of year. I continually have problems with spider mites when I start to bring in my trees.)

This is the top season for the deadly and hard-to-see spider mite. These little mites –not true insects – actually are arthropods and related to the spider. True insects have three body segments while mites have eight legs and only two body segments. Since they are not true insects, many insecticides have little effect on them.

Spider mites attack a plant by piercing leaf tissues (or needles in the case of junipers) and sucking the green liquid that oozes out. The leaf tissue then looks brown after it has lost its green color.

Quickly killing the affected foliage. Heavily infested leaves and branches can become covered with an almost invisible webbing – another telltale sign of their presence – examine your plants in early morning when the dew is still on.

A good way to determine that these mites exist is to hold a piece of white paper under the branch, and tap the branch sharply. If present, the mites will drop off and you will notice some of the spots on the paper moving.

The most common mite in our area (Evansville, IN) is the two-spotted spider mite (so called because under a magnifying glass you will see two dark spots on each side of its abdomen). This type of mite feeds on more than 150 flowers, vegetables and woody ornamentals.

Spider mites have a very short lifespan, but they reproduce quickly. When our temperatures reach into the 90's, the mite population can more than double in 3 days.

A regular inspection of your trees is imperative now. Spider mites also thrive on plants under stress. This stress may come from under-watering, or damaged foliage or root systems. One easy control is to continually wash the foliage down. Mites cannot live in a wet environment. Moisture will create a fungus disease which kills them. So keeping a moisture balance can help. Now, do not over-water the soil, just keep the foliage moist. By washing down your foliage every (or every other) day, you also wash out many mites along with the

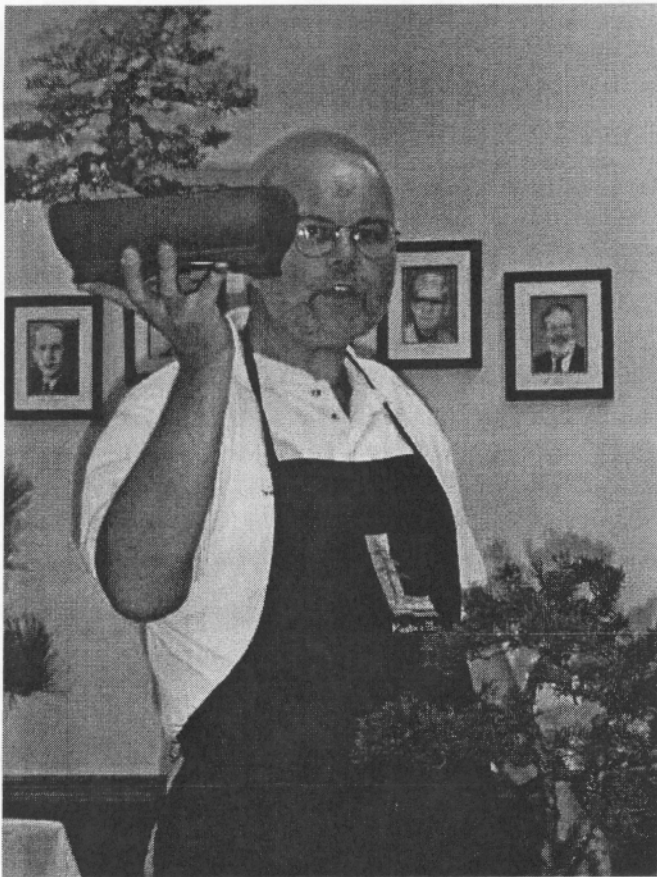
(continued on p. 6)

Photos from Master Class Display At MBS September Meeting

(all photos by Jean Sher)



Many displays included trees in combination with stands and accent plants



Ted Matson provided discussion of each tree's attributes and future development

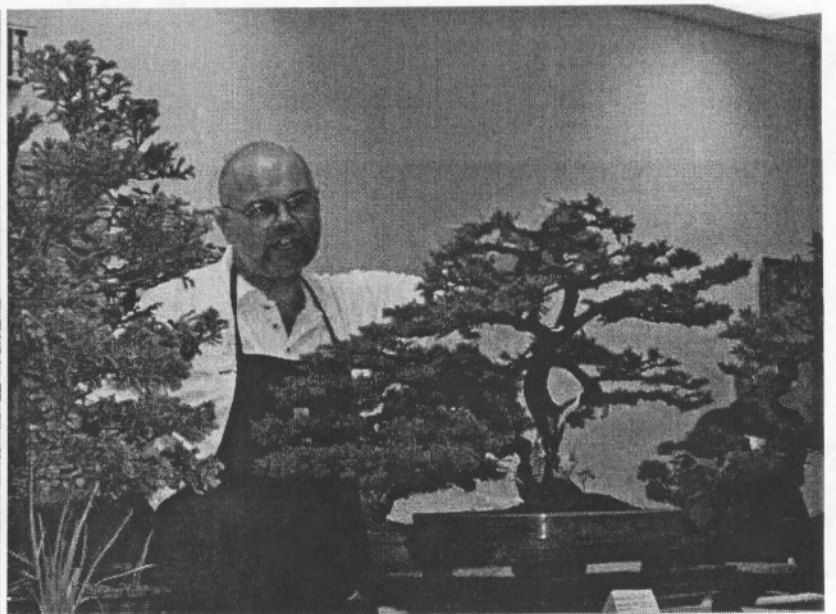
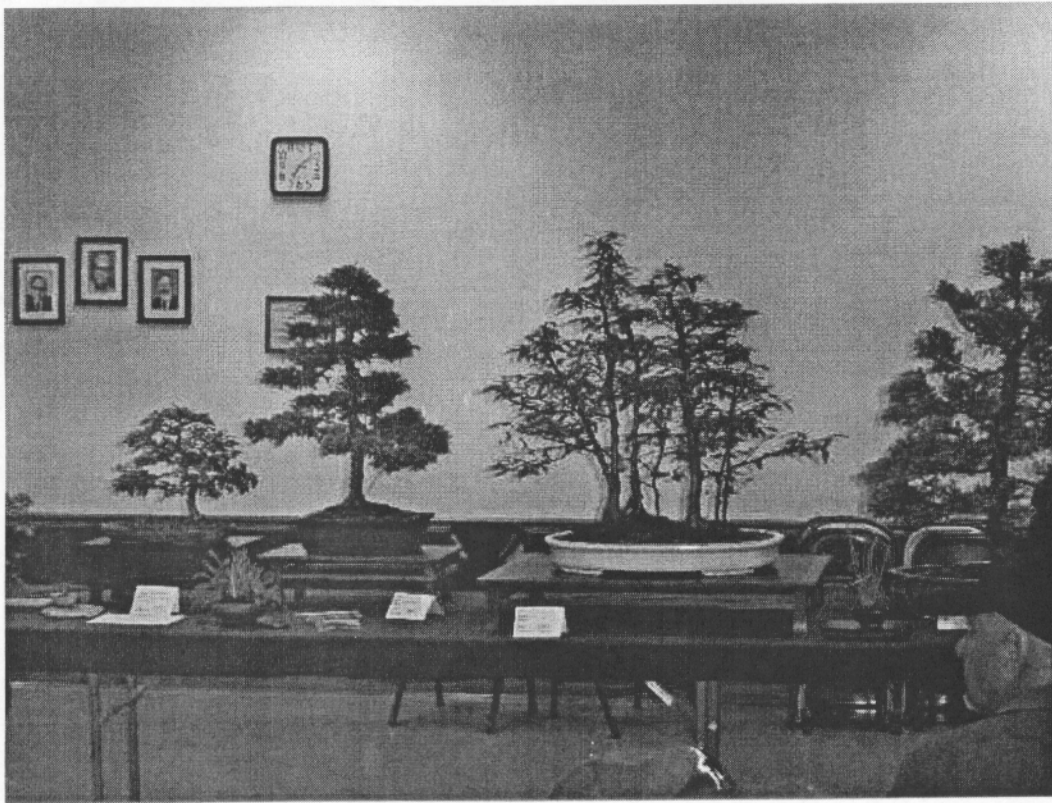
(Spider Mites – cont'd from p. 4)

dreaded aphids and scale. I generally wash down my foliage in late evening during my normal waterings. As mentioned, don't confuse watering the foliage with watering the soil. Insecticidal soap is a good control agent. I now use a product called Pyola, and so far this year, no mites. The Pyola is a light oil (canola) which encapsulates and smothers the mite and its eggs while not affecting many of the "good" insects which may fly by.

Pyola insect spray:

A broad spectrum organic spray that combines pyrethrins (a long popular insecticide derived from chrysanthemum flowers) and canola oil (extracted from rapeseed). Unlike most pesticides, it controls all stages of an insect's life cycle, including eggs (one pint makes 12 gallons for ~\$17)

With most pesticides the problem is usually timing. The fact is, some insecticides control adult insects while others kill larvae. Many oil-based sprays will suffocate eggs, but are ineffective on hatchlings. Unless you can match the spray with the life cycle, it will be ineffective. The beauty of Pyola is it will simultaneously attack adult insects as well as larvae and eggs. Another good point is it will last for days, discouraging other insects from feeding and laying eggs. Additionally, this spray is good against many types of insect including, but not limited to: ants, aphids, scale, beetle larvae, fungus gnats, mealy bugs, mites, spider mites, and whiteflies, plus caterpillars, tent caterpillars, and Japanese beetles.



Ted Matson discusses the styling of a young sapling

The display, like the classes, also included material in development



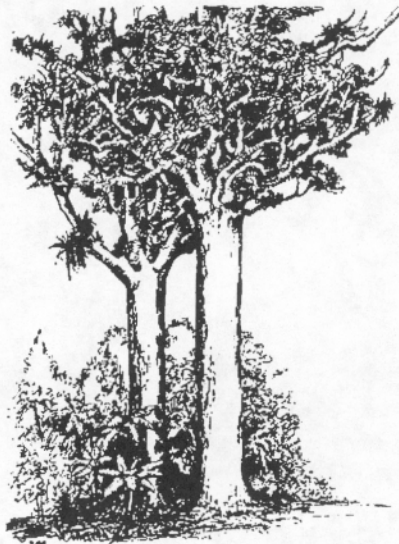
P.O. Box 198
Brookfield, WI 53008-0198
**RETURN SERVICE
REQUESTED**
Next Meeting of MBS
7PM, Tuesday, Oct. 4
Grace Lutheran Church
3030 W. Oklahoma

MBS Board, 2005

Kris Ziemann – President
Scott Hurula – 1st Vice President
Darlene Shaginaw – 2nd Vice President
Karen Kleineider – Treasurer
Sharon Schmidt – Secretary
Dr. Erskine Tucker – Board Member
Joe Herbert – Board Member
Allen Koszarek – Board Member
Ron Fortmann – MABA Representative
Jack Douthitt – Past President

Other Club Functions:

Houston Sanders – Newsletter Editor
Melba Stockhausen - Distribution
Pam Woythal – Webmaster
Joe Nemeč - Librarian
Mary Turner - membership chairperson
Jean Sher - telephone response



*The oak tree stands,
Nobly on the hill, even in
Cherry blossom time*

-Basho